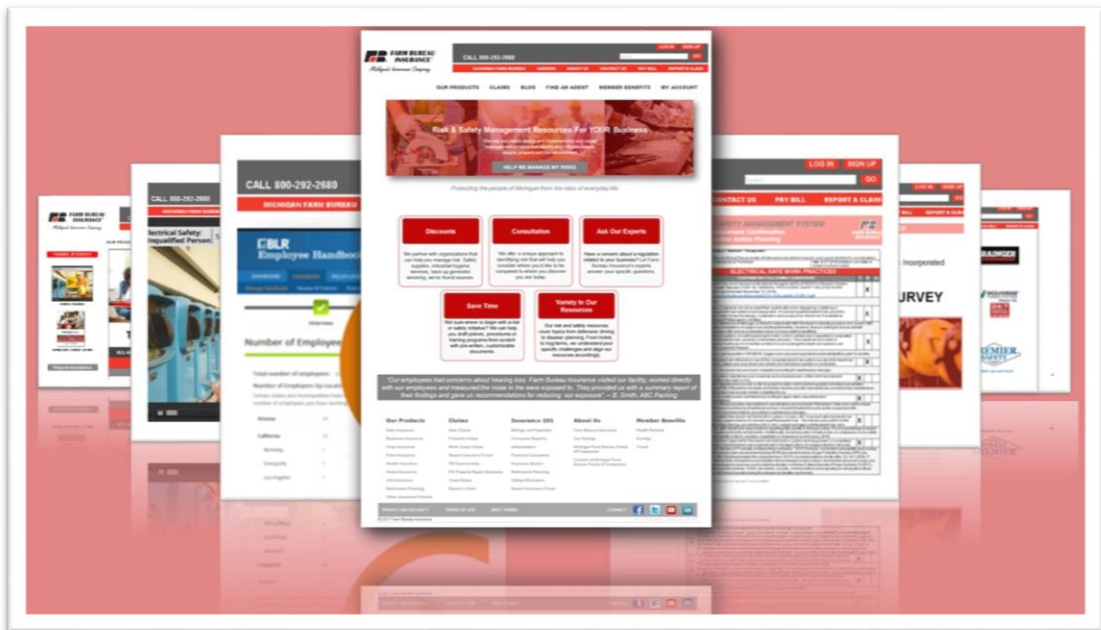


Loss Control Resources



2020 Listing

Version: 2

Client Services Overview

Risk Identification Confirmation Program

We offer an approach to identifying risk that helps our clients consider where they want to be and compare that to where they are today. This self-assessment approach is more than a typical checklist because it gives our clients a wide view of the risks facing their operation and matches their specific strengths and weaknesses in mitigating those risks. A corresponding corrective action program then provides our clients with a means to approach us with their specific service needs.

Agriculture Risk & Safety Management System Assessment

Many of the risks of agriculture businesses are shared by nearly all industries, agriculture has unique exposures and requires niche specific resources. We offer an approach to identifying risk for those in the agriculture industry based on other management system models customary to the industry. Our assessment program is self-directed and provides a method of identifying improvement options and helps clients identify which areas they can request assistance.

On-site Assistance

We visit our client's locations to review operations, work practices, prior loss records and current safety programs to understand their culture and discuss their specific needs. Recommendations for adjustments and additional resources available from Farm Bureau Insurance are offered where requested.

Ergonomics Assistance

Each client has their specific needs when it comes to ergonomics so we provide a development plan. We train client's staff on risk factor evaluation and assist with the development and administration of their ergonomics program.

Job Hazard Analysis (JHA) and Job Safety Analysis (JSA)

We assist clients with methods to review their work tasks in a step-by-step method to identify hazards and determine engineering and administrative corrections.

Personal Protective Equipment (PPE) Certifications

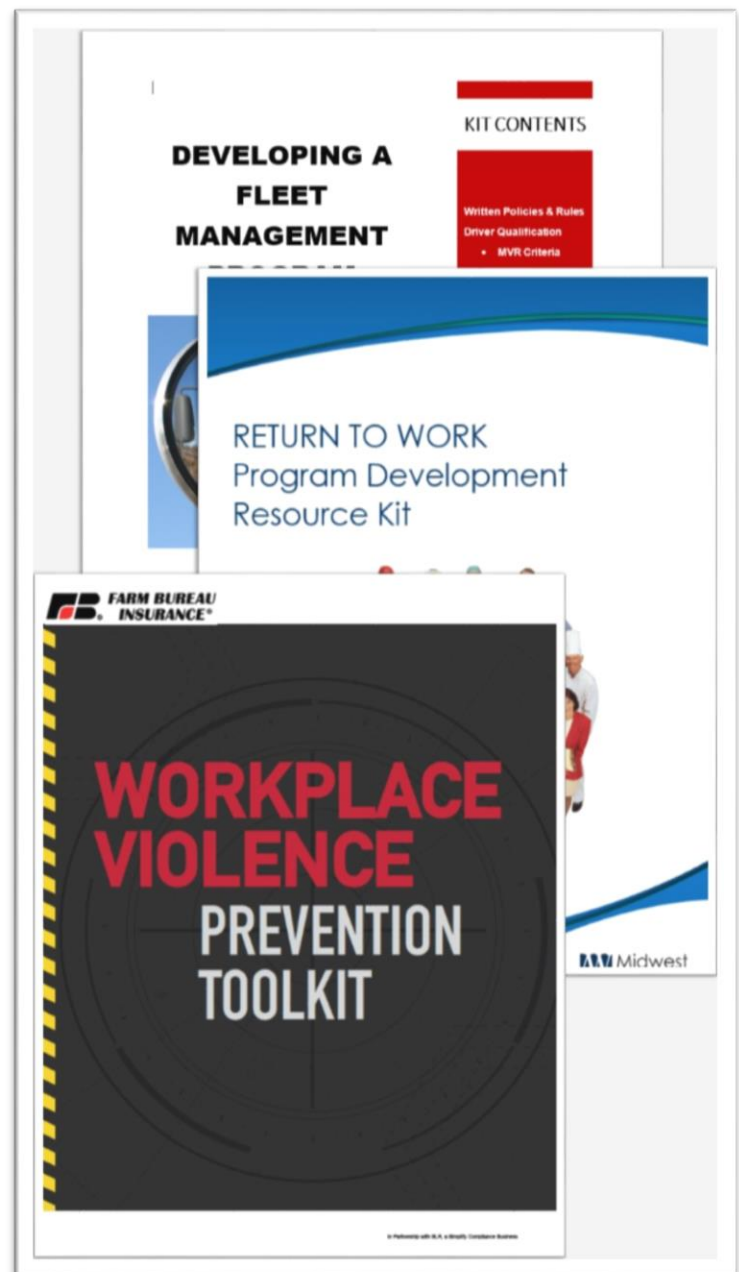
We assist clients with methods to review their work tasks in a step-by-step method to identify necessary personal protective equipment and training.

Assistance with MIOSHA Recordable Injury Recordkeeping

Is an injury "recordable" for MIOSHA 300 log recordkeeping requirements? Is an injury "reportable" to MIOSHA's website or by phone within 8 or 24 hours of the incident? We help our clients understand their MIOSHA recordkeeping requirements.

Program Development

Accidents
ADA
Alcohol and Drugs
Alcohol and Drugs (Motor Carriers)
Audits
Bloodborne Pathogens
Confined Spaces
Driving Safely
Emergency Action Plans
Emergency Preparedness
Ergonomics
Fire Extinguishers
Fire Prevention
First Aid
Flammable Liquids
Fleet Management
Foot Protection
Forklifts
Hand and Portable Power Tools
Health – General
Hot Work
Housekeeping
Injury and Illness Recordkeeping
Inspections
Labels
Ladders
Lockout Tagout
Machine Guarding
Material Handling – General
Noise
Personal Protective Equipment PPE
Process Safety Management
Recordkeeping – General
Return to Work
Safety – General
Safety Committees
Safety Culture
Safety Data Sheets (SDS)
Safety Plans
Scaffolding
Security – General
Training
Violence in the Workplace
Welding, Cutting, and Brazing
Workers' Compensation

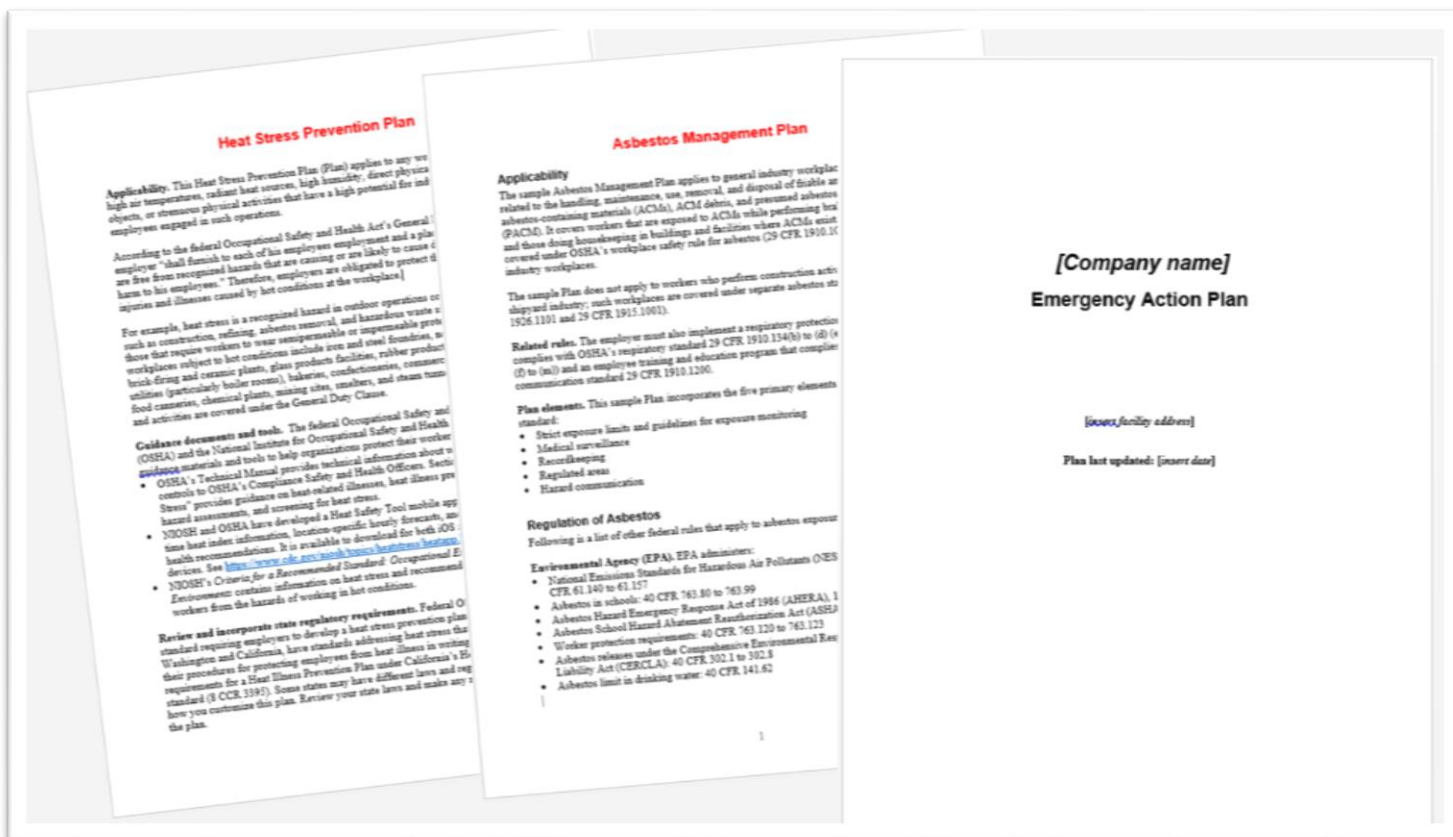


Easy Written Plans

Accidents
 Asbestos
 Compressed Gases
 Cranes and Slings
 Emergency Preparedness
 Eye and Face Protection
 Fire Prevention
 Flammable Liquids
 Hazard Communication
 Heat and Cold
 Job Hazard Analysis JHA
 Ladders
 Machine Guarding
 Office Safety
 Safety – General
 Scaffolding for Construction
 Signs
 Slip and fall
 Trenching for Construction

Aerial Lifts
 Back Safety
 Confined Spaces
 Electrical Safety
 Ergonomics
 Fall Protection Construction
 First Aid
 Forklifts
 HAZWOPER
 Housekeeping
 Job Safety Analysis JSA
 Ladders for Construction
 Material Handling
 Process Safety Management
 Safety Committees
 Safety Data Sheets (SDS)
 Silica Dust - General
 Spill Prevention
 Violence in the Workplace

Alcohol and Drugs
 Bloodborne Pathogens
 Confined Spaces for Construction
 Emergency Action Plans
 Exit Routes
 Fire Extinguishers
 First Aid for Construction
 Hand and Portable Power Tools
 Healthcare Safety
 Injury and Illness Recordkeeping
 Laboratory Safety
 Lockout Tagout
 Noise
 Respiratory Protection
 Safety Plans
 Security – General
 Silica Dust for Construction
 Training
 Welding, Cutting, and Brazing



Forms

- Accidents
- Aerial Lifts
- Alcohol and Drugs
- Asbestos
- Bloodborne Pathogens
- Commercial Driver Safety
- Compressed Gases
- Confined Spaces
- Confined Spaces for Construction
- Cranes and Derricks for Construction
- Cranes and Slings
- EHS Strategy
- Electrical Safety
- Emergency Action Plans
- Emergency Preparedness
- Ergonomics
- Exit Routes
- Eye and Face Protection
- Fall Protection for Construction
- Fire Extinguishers
- Forklifts
- Hazard Communication
- Hazardous Materials HAZMAT Transportation
- Hazardous Waste Operations HAZWOPER
- Health – General
- Healthcare Safety
- Hours of Service – Motor Carriers
- Injury and Illness Recordkeeping
- Job Hazard Analysis JHA
- Job Safety Analysis JSA
- Lockout Tagout
- Machine Guarding
- Machine Safety
- Material Handling – General
- Motor Carrier Safety
- Noise
- OSHA
- Permissible Exposure Limits PEL
- Personal Protective Equipment PPE
- Process Safety Management PSM
- Respiratory Protection
- Safety – General
- Safety Committees
- Safety Culture
- Scaffolding for Construction
- Safety Data Sheets (SDS)
- Security – General
- Slip and fall

- Spill Prevention
- Training
- Violence in the Workplace
- Workers' Compensation

The image shows a stack of three safety forms. The top form is the 'Confined Space Evaluation Worksheet' with fields for 'Attachment [number]', '[Company name]', and 'Confined Space Evaluation Worksheet'. The middle form is the 'Fire/Evacuation Drill Evaluation' with fields for 'Attachment [number]', 'Drill date:', 'Drill Facility/Location:', 'How emergency fire signaled to employees:', 'Time evacuation drill began:', 'Time exit doors opened:', 'Time area completely evacuated:', 'Total time to evacuate (time began minus the time evacuated): _____ minutes.', and 'Were all alarms checked _____ minutes.'. The bottom form is the 'Personal Protective Equipment (PPE) Survey' with a header for 'Insert Logo' and 'Personal Protective Equipment (PPE) Survey'. It contains a table with columns for 'EYESPACE', 'HEAD', 'HAND/ARMS', 'FEET/LEGS', 'BODY/SKIN', 'BODY/WHOLE', and 'LUNGS/EARS'. Each row has sub-columns for 'Work-related exposure(s)', 'PPE required to mitigate hazard', and 'Can hazard be eliminated without use of PPE? Yes (Y) No (N)'. The table lists various hazards and corresponding PPE requirements.

Checklists

Accidents
 Air Contaminants
 Asbestos
 Audits
 Back Safety
 Bloodborne Pathogens
 Chemical Hazards
 Commercial Driver Safety
 Compressed Gases
 Confined Spaces
 Confined Spaces for Construction
 Construction
 Cranes and Derricks for Construction
 Cranes and Slings
 EHS Strategy
 Electrical Safety
 Emergency Preparedness
 Ergonomics
 Exit Routes
 Eye and Face Protection
 Fall Protection for Construction
 Fire Extinguishers
 Fire Prevention
 First Aid
 Forklifts
 Hand and Power Tools
 Hand Protection
 Hazard Communication
 Hazardous Materials HAZMAT Transportation
 Hazardous Waste Operations HAZWOPER
 Health – General
 Healthcare Safety
 Housekeeping
 Injury and Illness Recordkeeping
 Inspections
 Laboratory Safety
 Ladders
 Ladders for Construction
 Lead
 Lockout Tagout
 Machine Guarding
 Machine Safety
 Material Handling – General
 New Employee Orientation
 Noise
 Office Safety
 Painting and Spraying
 Powered Platforms
 Personal Protective Equipment PPE
 Process Safety Management PSM
 Respiratory Protection

Safety – General
 Safety Culture
 Scaffolding for Construction
 Safety Data Sheets (SDS)
 Shift Work
 Signs
 Slip and fall
 Temporary Workers
 Toxic and Hazardous Substances
 Training
 Trenching for Construction
 Violence in the Workplace
 Welding, Cutting, and Brazing

New Hire Orientation Checklist

New employee safety orientation checklist

You've finally filled some of those open positions, and it's time to put your new employees to work. First, though, you need to make sure they understand your facility's safety ins and outs. This checklist can help you ensure that you cover all of your new employee safety orientation bases.

Key Points To Understand Before you Start Working with Us
 Before they start working on day one, your new hires need to be familiar with:

- **Safety rules.** It's not always obvious that a rule—for example, rules about visitors to the facility, signing in and out, and similar controls—is safety-critical, so make sure workers understand all relevant rules.
- **Company policies.** As with safety-related rules, it may not be obvious—for example, policies on working alone—are important for safety reasons.
- **Potential hazards.** Walk through the work area, and point out important hazards new workers need to be aware of.
- **Emergency procedures.** New workers need to know where to find, and how to use, emergency eyewashes and showers, first-aid kits, fire blankets, fire extinguishers, fire exits, and fire alarm pull boxes. They need to be familiar with emergency evacuation signals and procedures. New workers should also fill out "in case of emergency" contact information that you will keep on file.
- **Hazardous materials use and storage.** New workers need to know where and how hazardous materials are stored, used, and disposed of, even if they will not use these materials, so they can avoid creating a hazard. They also need to know the basics of your hazard communication program, including how to read hazard labels and where to find safety data sheets.
- **Food and beverage policies.** Make sure new workers know where they can store personal food and beverages. If eating and drinking are not permitted in some areas, point those out.
- **Accident and injury reporting procedures.** New workers need to know how to report an accident, injury, or workplace emergency. Make sure they know where to find contact information for the right people.
- **Worker rights and responsibilities.** Workers should know their safety-related rights and responsibilities.
- **How to get involved.** Do you have a safety committee? A suggestion box? Let workers know that safety is important in your workplace, and encourage them to get involved.

BLR

Home | My Account | Jobs | About Us | Terms & Conditions | Privacy Policy | Disclaimer | Contact Us | Advertising | Partners | Site Map | Search

We support the worker's right to a safe and healthy workplace. This includes the right to a safe and healthy workplace and corrective actions. It is not the intent to find blame or assign responsibility. The focus is to identify how the incident can be prevented.

Tailgate type safety meetings are encouraged at the beginning of each day when personnel are involved in an operational process or procedure involving contractor equipment and personnel. These meetings should outline the work plan with a discussion of how the activity can be conducted without accidents. Such meetings will be five to ten minutes in length.

<p>2. ACCIDENT / HAZARD REPORTING</p> <p>All on the job incidents are to be reported to your immediate supervisor or the Human Resources department, even if minor or no medical attention is necessary, before the end of your shift in which the incident occurred. Failure to report incidents can result in denial of commercial insurance coverage, repeat incidents, and possible discipline action up to and including termination.</p>	<p>APP Supervisor's Accident Review Form</p> <p>Motor Vehicle Accident Report</p> <p>GO KIT</p>
<p>3. ANTI-DISCRIMINATION POLICY</p> <p>Harassment or discrimination in any form will not be permitted. This includes but is not limited to:</p> <ul style="list-style-type: none"> Sexual harassment/discrimination Racial harassment/discrimination Age harassment/discrimination 	<p>Employee Handbook</p>

Posters

- Accidents
- Alcohol and Drugs
- Back Safety
- Bloodborne Pathogens
- Compressed Gases
- Driving Safety
- Electrical Safety
- Emergency Preparedness
- Eye and Face Protection
- Fire Extinguishers
- Fire Prevention
- First Aid
- Foot Protection
- Forklifts
- Hand and Power Tools
- Hand Protection
- Health – General
- Heat and Cold
- Housekeeping
- Ladders
- Lockout Tagout
- Machine Guarding
- Noise
- OSHA
- Personal Protective Equipment PPE
- Safety – General
- Safety Culture
- Safety Data Sheets (SDS)
- Security - General
- Slip and fall
- Teen Workers in Restaurant
- Temporary Workers
- Violence in the Workplace
- Wellness
- Workers' Compensation



Training (Online Interactive)

Accidents	Aerial Lifts	Air Contaminants	Alcohol and Drugs
Asbestos	Back Safety	Bloodborne Pathogens	Chemical Hazards
Commercial Driver	Compressed Gases	Confined Spaces	Construction
Corrosives and Batteries	Cranes and Slings	Driving Safety	Electrical Safety
Emergency Action Plans	Emergency Preparedness	Enforcement	Ergonomics
Exit Routes	Eye and Face Protection	Fall Protection	Fire Extinguishers
First Aid	Flammable Liquids	Food Service	Foot Protection
Forklifts	Hand and Power Tools	Hand Protection	HAZCOM
HAZMAT	HAZWOPER	Health-General	Healthcare Safety
Heat and Cold	Hours of Service HOS	Housekeeping	
Job Hazard Analysis JHA	Job Safety Analysis JSA	Labels	Laboratory Safety
Ladders	Lead	Lead-Construction	Lockout Tagout
Machine Guarding	Material Handling	Noise	Office Safety
OSHA	Personal Protective Equipment PPE	Security	Safety – General
Safety Data Sheets	Scaffolding-Construction	Toxic Substances	Shift Work
Silica Dust-Construction	Slip and fall	Workplace Violence	Trenching
Wellness	Workers' Comp		

TrainingToday

Defensive Driving - Noncommercial Motorists (08:23 / 20:37)

Avoid Collisions

Defensive Driving - CMV (25:02 / 29:31)

True or False?

T The most important rule in lane usage is to maintain a safe following distance.

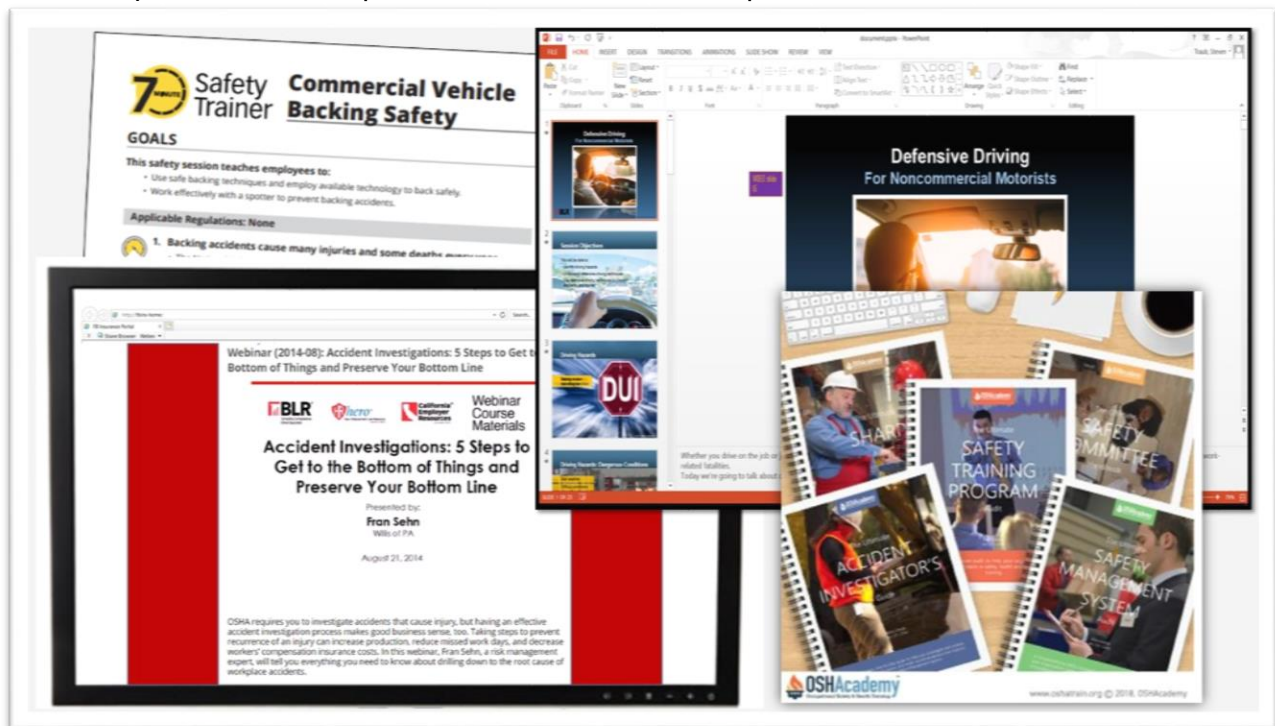
F You should stop between 5 and 15 feet of railroad tracks.

Stop 15 to 50 feet before tracks.

© 2017 - Business & Legal Resources

Training (Toolbox meetings, PowerPoints, Webinars, Handouts)

Accident Investigation	ADA	Aerial Lifts	Agriculture
Air Contaminants	Alcohol and Drugs	Alcohol and Drug DOT	Asbestos
Audits	Back Safety	Bloodborne Pathogens	Cell Phones
Chemical Hazards	Combustible Dust	Commercial Driver Safety	Compressed Gas
Confined Spaces	Construction	Conveyors	Corrosives
Cranes and Derricks	Cranes and Slings	Demolition Safety	Dental Office
Dipping Coating	Diving	DOT	Driving Safety
EHS Metrics	EHS Strategy	Electrical Power	Electrical Safety
Emergency Preparedness	Emergency Plan	Enforcement	Environmental
Ergonomics	Exit Routes	Explosives	Eye and Face
Fall Protection	Fire Extinguishers	Fire Prevention	First Aid
Flammable Liquids	Fleet Safety	Food Service	Foot Protection
Forklifts	Grain Handling-Agriculture	Hand and Power Tools	Hand Protection
Hazard Controls	HAZCOM	HAZMAT Transportation	HAZWOPER
Head Protection	Health-Biological	Health-General	Health-Biological
Healthcare Safety	Heat and Cold	HIPPA	Hospital
Hours of Service	Housekeeping	Industrial Hygiene	Injury 300 Log
Injury Reporting	Inspections	JHA	JSA
Labels	Laboratory Safety	Ladders	Lead
Lead-Construction	Lockout Tagout	Machine Guarding	Material Handling
Nail Gun	Nail Salon	New Hire Orientation	Noise
Office Safety	OSHA	Painting and Spraying	PPE
Pharmacy	Physical Health	Process Safety	Recordkeeping
Respirators	Restaurant Young Worker	Safety-General	Safe Accountability
Safety Committees	Safety Culture	SDS	Safety Leadership
Safety Plans	Scaffolding	School Athletics	School Crisis Plan
School Exterior Safety	Security-General	Shift Work	Signs
Silica Dust-Construction	Steel Erection	Tattoo Body Art	Tool Safety
Slip and fall	Spill Prevention	Supervisor Safety	Toxic Substances
Trenching Walking	Working Surfaces	Welding Cutting Brazing	Wellness
Workers' Compensation	Workplace Stress	Workplace Violence	Ventilation



Partners

Farm Bureau Insurance partners with the leading content providers in the industry to offer free and discounted training and reference materials.

Safety.BLR.com®
Safety Training & Compliance Just Got Easier

TrainingToday Professional  Powered by 

 **OSHAcademy™**
Occupational Safety & Health Training

Request Assistance

Your Farm Bureau Insurance Agent will be happy to assist you with arranging for risk and safety management assistance and resources.

Contact loss control through the Contact Us section of our worldwide website or email loss control at losscontrol@fbinsmi.com